

VALVES VENT

MODEL: 1241 - VV

Revision: 0

BULLETIN
1241

DESCRIPTION

The 1241-VV is generally used as the vent valve located between the two blocking valves in the "block and vent" systems. They are used in both the pilot and main lines in gas fired systems.

Vent valves are normally open, internal pilot operated solenoid valves. All valves have a general purpose NEMA type 1 enclosure. These valves, 3/4" to 1-1/2", are designed to perform properly when mounted in any position. However, for optimum life and performance, the solenoid should be mounted vertical and upright so as to reduce the possibility of foreign matter accumulating in the core tube area. The 2" valve must be mounted with solenoid vertical and upright or in a horizontal position.

SPECIFICATIONS

Service Natural, manufactured, mixed, and LP gases.

Body Material 3/4" bronze
1" to 2" aluminum

Seat Type Buna - N, soft seat

Electrical 15.4 watts, 34 amps in-rush, 15.6 amps holding, 120 V/60 Hz, class A coil suitable for 77° F, 2-wire control circuit, solenoid jacket rotates 360°, 1/2" conduit connection, 6" wire leads.

VENT PIPE SIZES

- | | |
|--|---|
| 1. If the main line is less than 3/4", then the vent line shall be equal to the cross sectional area of the main line. | 2. The vent valve port (orifice) shall have a cross sectional area equal to the specified vent valve. |
|--|---|

Fuel Line Diameter	Vent Line Diameter
Up to 1-1/2"	3/4"
2"	1"
2-1/2" - 3"	1-1/4"
3-1/2"	1-1/2"
4" - 5"	2"



FEATURES

- Normally open on current failure.
- Soft seat.
- Rotatable housing.
- Replaceable coil.
- UL - CSA approvals.

APPROVALS



CAUTION: Operation of combustion equipment can be hazardous resulting in bodily injury or equipment damage. Each burner should be supervised by a combustion safeguard and only qualified personnel should install, make system adjustments and perform any required service.



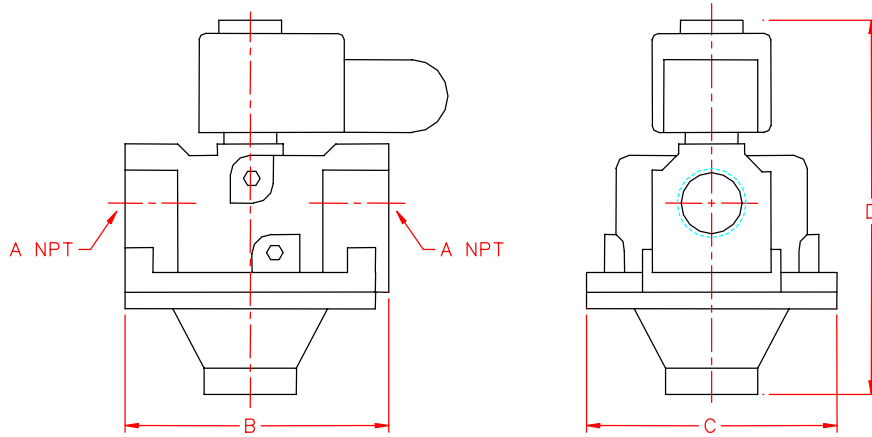
ORDAN THERMAL PRODUCTS LTD
Combustion Equipment & Controls for Industry
21 Amber St # 9, Markham Ontario Canada L3R 4Z3
Tel: (905) 475-9292 Fax: (905) 475-3286
www.ordanthermal.com

NOTICE: PYRONICS practices a policy of continuous improvement in the design of its products. It reserves the right to change the specifications at any time without prior notice.

VALVES VENT

BULLETIN 1241
PAGE NO. 2

DIMENSIONS



Model Number	A	B	C	D	Weight	
					Lbs.	Kgs.
6VV	3/4	5	5-3/8	6-13/16	2.5	1.13
8VV	1	5	5-3/8	6-13/16	3.8	1.72
10VV	1-1/4	5	5-3/8	6-13/16	3.9	1.77
12VV	1-1/2	5	5-3/8	6-13/16	4.0	1.81
16VV	2	6-3/32	6-5/16	7-7/16	5.5	2.49

NOTE: All dimensions are in inches.

CAPACITY TABLE

Model Number	Pipe Size NPT (inches)	Orifice Size (inches)	Cv Flow Factor	Gas Capacity * Btu/Hr.	Operating Pressure Differential (psi)		Fluid & Ambient Temperature F		Watt Rating / Class of Coil Insulation	Power Consumption	
					Min.	Max.	Min.	Max.		VA Holding	VA Inrush
					6VV	3/4	1-5/8	11		659,000	0
8VV	1	1-5/8	21	1,179,000	0	5	- 40	125	20/F	43	240
10VV	1-1/4	1-5/8	32	1,538,000	0	5	- 40	125	20/F	43	240
12VV	1-1/2	1-5/8	35	1,615,250	0	5	- 40	125	20/F	43	240
16VV	2	2-3/32	60	2,924,500	0	5	- 40	125	20/F	43	240

* 1" W.C. Drop @ 2" W.C. Inlet Pressure, 1,000 Btu/Cu. Ft. or more, 0.64 Specific Gravity Gas.

ORDERING INFORMATION

1. Specify Model Number and Quantity
2. Shipping Instructions