

# VALVES - SOLENOID SVM-25 SERIES

MODEL: 1273 - SVM - 25

Revision: 0

BULLETIN  
1273

## DESCRIPTION

The SVM-25 series are electrically operated solenoid type on-off gas valves for main line or pilot line service. Suitable for all types of gas-fired heating equipment.

Normally closed – close on current failure. Replaceable coil for simplicity of field service.

## SPECIFICATIONS

Service ..... Natural, manufactured, mixed, LP, scrubbed coke, and scrubbed/dried sewer gases.

Body Material ..... Aluminum

Diaphragm Material ..... Nitrile

Seat Material ..... Nitrile

Media Temperature ..... 77° F nominal

Electrical current ..... 120v - 60 Hz.  
17.5 watts, 150 VA inrush, 31 VA holding

Electrical wiring ..... 2 – wire control circuit. Replaceable coil.  
Solenoid jacket rotates 360°. 6" wire leads.

Electrical Coil ..... Class "F" coil suitable for temperature to 175° F.

Mounting Positions ..... Upright or horizontal on sizes up to 1-1/2".  
Vertical only on sizes larger than 1-1/2".

Maximum Operating  
Pressure Differential ..... 25 to 30 psi



**3SVM-25 TO 16SVM-25**

## FEATURES

- Normally closed on current failure.
- Soft seat - tight shutoff.
- Rotatable solenoid - replaceable coil.
- UL and CSA Listed.
- CGA and AGA design certified.
- FM Approved for safety shutoff through 3/4" size.
- All types of gases.

## APPROVALS



CAUTION: Operation of combustion equipment can be hazardous resulting in bodily injury or equipment damage. Each burner should be supervised by a combustion safeguard and only qualified personnel should install, make system adjustments and perform any required service.



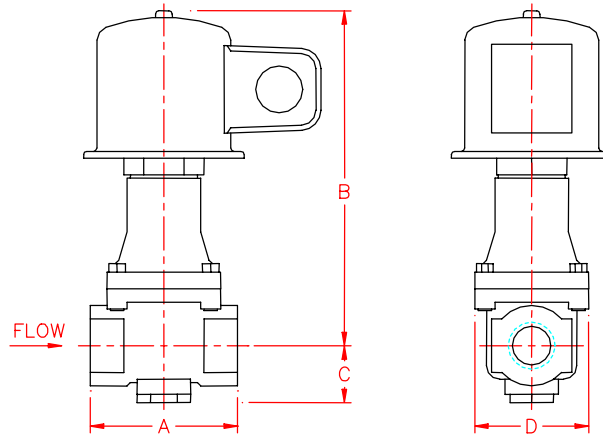
**ORDAN THERMAL PRODUCTS LTD**  
Combustion Equipment & Controls for Industry  
21 Amber St # 9, Markham Ontario Canada L3R 4Z3  
Tel: (905) 475-9292 Fax: (905) 475-3286  
[www.ordanthermal.com](http://www.ordanthermal.com)

NOTICE: PYRONICS practices a policy of continuous improvement in the design of its products. It reserves the right to change the specifications at any time without prior notice.

# VALVES - SOLENOID SVM-25 SERIES

BULLETIN 1273  
PAGE NO. 2

## DIMENSIONS



Model Number	Pipe Size NPT	A	B	C	D	Weight	
						Lbs.	Kgs.
3SVM-25	3/8	2.75	6.33	1.06	2.31	3.10	1.41
4SVM-25	1/2	2.75	6.33	1.06	2.31	3.00	1.36
6SVM-25	3/4	2.75	6.33	1.06	2.31	2.95	1.34
8SVM-25	1	4.00	7.20	1.41	4.27	5.05	2.29
10SVM-25	1-1/4	4.76	7.56	1.79	4.77	4.95	2.25
12SVM-25	1-1/2	4.76	7.56	1.79	4.77	4.86	2.20
16SVM-25	2	8.12	7.61	2.16	7.69	9.80	4.45

NOTE: All dimensions are in inches.

## CAPACITY TABLE

Catalog Number	Pipe Size NPT (inches)	Orifice Size (inches)	Cv Flow Factor	Gas Capacity (Btu/Hr.)	Max. Operating Pressure Differential (psi) Fuel Gas A-C	Ambient Temperature (°F)		UL	FM	CSA
						Min.	Max.			
						1273--3SVM-25	3/8			
1273--4SVM-25	1/2	3/4	6.2	322,000	30	- 20	175	X	X	X
1273--6SVM-25	3/4	3/4	8.0	370,000	30	- 20	175	X	X	X
1273--8SVM-25	1	1-1/2	18.0	1,120,000	25	- 20	175	X		X
1273--10SVM-25	1-1/4	2	34.0	1,710,000	25	- 20	175	X		X
1273--12SVM-25	1-1/2	2	37.0	1,790,000	25	- 20	175	X		X
1273--16SVM-25	2	4-1/2	80.0	4,180,000	25	32	175	X		

1" W.C. Drop @ 2" W.C. Inlet Pressure, 1,000 Btu/Cu. Ft. or more, 0.64 Specific Gravity Gas

## ORDERING INFORMATION

1. Specify Model Number and Quantity
2. Shipping Instructions