

# VALVES

## “BALL TYPE” - LARGE PORT

MODEL: 1451-FPV

Revision: 0

BULLETIN  
1451

### DESCRIPTION

The **Ball Valve** provides a large port and straight through flow with minimum pressure drop. The Ball is plated with a hard chromium finish and rotates on reinforced Teflon seats assuring long life and easy operation.

A “Blow-Out” proof stem keys into the Ball Valve and turns on a Teflon thrust bearing. The gland packing is also reinforced Teflon. The valve body and all wetted metal surfaces are bronze to resist corrosion.

### APPLICATIONS

Ball Valves are ideal for on-off control. With valve seats at both ends, flow may be in either direction. As pressure increases, the force improves the conformity between the ball and the seal assuring a bubble tight seal.

This valve is designed for use with gas, liquid propane, saturated steam, and other services. The valve is UL listed and meets requirements for LP - Gas service.

### CAPACITY TABLE

Model No.	Flow @ 1" W.C. Drop		
	Nat. Gas	Propane Gas	Air
2FPV	390	240	300
3FPV	390	240	300
4FPV	580	360	450
6FPV	1430	900	1110
8FPV	2020	1270	1570
10FPV	2640	1650	2040
12FPV	4570	2860	3540
16FPV	5770	3620	4470

Flows are at 70 °F and 1 psig inlet pressure.



### FEATURES

- Large Port / Low Pressure Drop.
- “Blow-Out Proof” Stem.
- Bronze Construction.
- Working Temperatures up to 350 °F.
- Self Cleaning - No Lubrication.
- Two-Way Flow.
- UL Listed for LP Gas, Natural Gas, Flammable Liquid, and Heated Oil.
- 600 psig - WOG  
150 psig - Saturated Steam  
250 psig - Flammable Gases
- 250 psig Maximum UL Listing.

### APPROVALS



LISTED

- Guide YSDT: LP Gas Shutoff Valve.
- Guide YRBX: Flammable Liquid Shutoff Valve.

CAUTION: Operation of combustion equipment can be hazardous resulting in bodily injury or equipment damage. Each burner should be supervised by a combustion safeguard and only qualified personnel should install, make system adjustments and perform any required service.



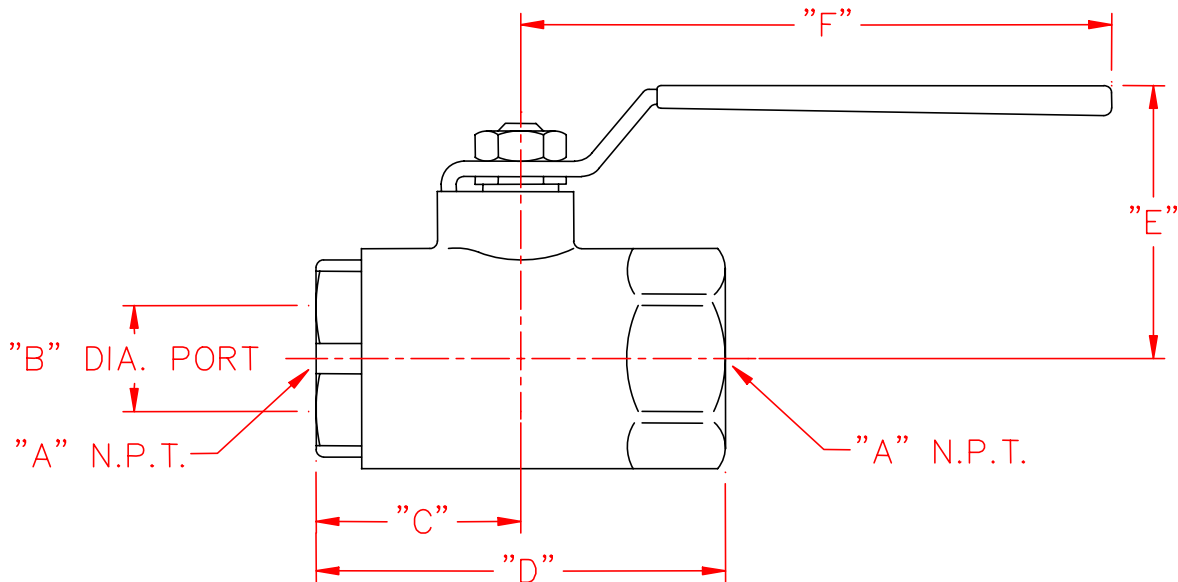
**ORDAN THERMAL PRODUCTS LTD**  
Combustion Equipment & Controls for Industry  
21 Amber St # 9, Markham Ontario Canada L3R 4Z3  
Tel: (905) 475-9292 Fax: (905) 475-3286  
[www.ordanthermal.com](http://www.ordanthermal.com)

NOTICE: PYRONICS practices a policy of continuous improvement in the design of its products. It reserves the right to change the specifications at any time without prior notice.

# VALVES "BALL TYPE" - LARGE PORT

BULLETIN 1451  
PAGE NO. 2

## DIMENSIONS



Catalog No.	Part No.	A NPT	B Port	C	D	E	F	Weight
1451 -- 2FPV	05480C1	1/4	3/8	1-1/32	2-1/16	1-3/4	3-7/8	0.50
1451 -- 3FPV	05480C2	3/8	3/8	1-1/32	2-1/16	1-3/4	3-7/8	0.50
1451 -- 4FPV	05480C3	1/2	1/2	1-1/8	2-1/4	1-13/16	3-7/8	0.60
1451 -- 6FPV	05480C4	3/4	11/16	1-1/2	3	2-1/8	4-7/8	1.25
1451 -- 8FPV	05480C5	1	7/8	1-11/16	3-3/8	2-1/4	4-7/8	1.70
1451 -- 10FPV	05480C6	1-1/4	1	2	4	2-5/8	5-1/2	3.40
1451 -- 12FPV	05480C7	1-1/2	1-1/4	2-3/16	4-3/8	2-7/8	5-1/2	4.60
1451 -- 16FPV	05480C8	2	1-1/2	2-11/32	4-11/16	3-1/16	5-1/2	7.50
9999 -- 20FPV	05480C9	2-1/2	2-1/2	3-1/4	6-1/2	4-1/8	8	17.25
9999 -- 24FPV	05480C10	3	2-1/2	3-3/8	6-3/4	4-1/8	8	18.60
9999 -- 6FPV-CGA	05480C11	3/4	3/4	1.26	2.67	1.93	3.85	1.25
9999 -- 8FPV-CGA	05480C12	1	1	1.65	3.42	2.19	4.78	1.70
9999 -- 10FPV-CGA	05480C13	1-1/4	1-1/4	1.87	3.86	2.37	4.78	3.40
9999 -- 12FPV-CGA	05480C14	1-1/2	1-1/2	2.05	4.22	2.78	5.50	4.60
9999 -- 16FPV-CGA	05480C15	2	2	2.48	5.02	3.15	5.50	7.50

NOTE: All dimensions are in inches. All weights are in pounds.

## ORDERING INFORMATION

1. Specify Model Number and Quantity
2. Shipping Instructions