

VALVES THREADED BUTTERFLY MOTORIZED PACKAGE

MODEL: 1312-TBV-CMAP

Revision: 0

BULLETIN
1312

DESCRIPTION

The **TBV-CMAP** motor operated butterfly valves are used for modulating air and gas flows for most types of combustion systems. The valve body is cast iron, the disc is steel, and the shaft is brass. Special materials for corrosive gases are available. A unique "O"-Ring seal prevents leakage around the shaft.

The valve crank rotates through an 80° arc. Disc position is indicated by a pointer on the valve crank arm and a scale on the valve body.

The motor mounting base is pre-drilled for Honeywell, Barber Colman, and Leeds & Northrup control motors.

Modulating motors generally require that the shaft be horizontal. The motor should be wired according to the manufacturer's installation instructions so that proper rotation is achieved. Limit switches on modulating motors should be used to limit stroke.

The TBV-CMAP includes the butterfly valve, motor mounting base, valve crank arm, and an adjustable linkage rod. Modulating motors are available.



CAPACITY TABLE

Model No.	Pipe Size NPT (in.)	SCFH Air Wide Open Capacity at 1" W.C. Pressure Drop
6 TBV-CMAP	3/4	770
8 TBV-CMAP	1	1,900
10 TBV-CMAP	1-1/4	2,600
12 TBV-CMAP	1-1/2	3,100
16 TBV-CMAP	2	6,300
20 TBV-CMAP	2-1/2	8,500
24 TBV-CMAP	3	13,000
32 TBV-CMAP	4	28,000
48 TBV-CMAP	6	86,000

FEATURES

- Economical automatic flow control valve.
- For most fuel gases and air.
- Double bearing shaft -- positive alignment.
- 'O'-Ring sealed shaft.
- Disc position indicator on name plate.
- Cast iron body and steel disc.
- Lubricated swivel joints.
- 90° or 160° motor operation field adjustable.
- Easily adjustable.
- Standard control motors in stock.

CAUTION: Operation of combustion equipment can be hazardous resulting in bodily injury or equipment damage. Each burner should be supervised by a combustion safeguard and only qualified personnel should install, make system adjustments and perform any required service.



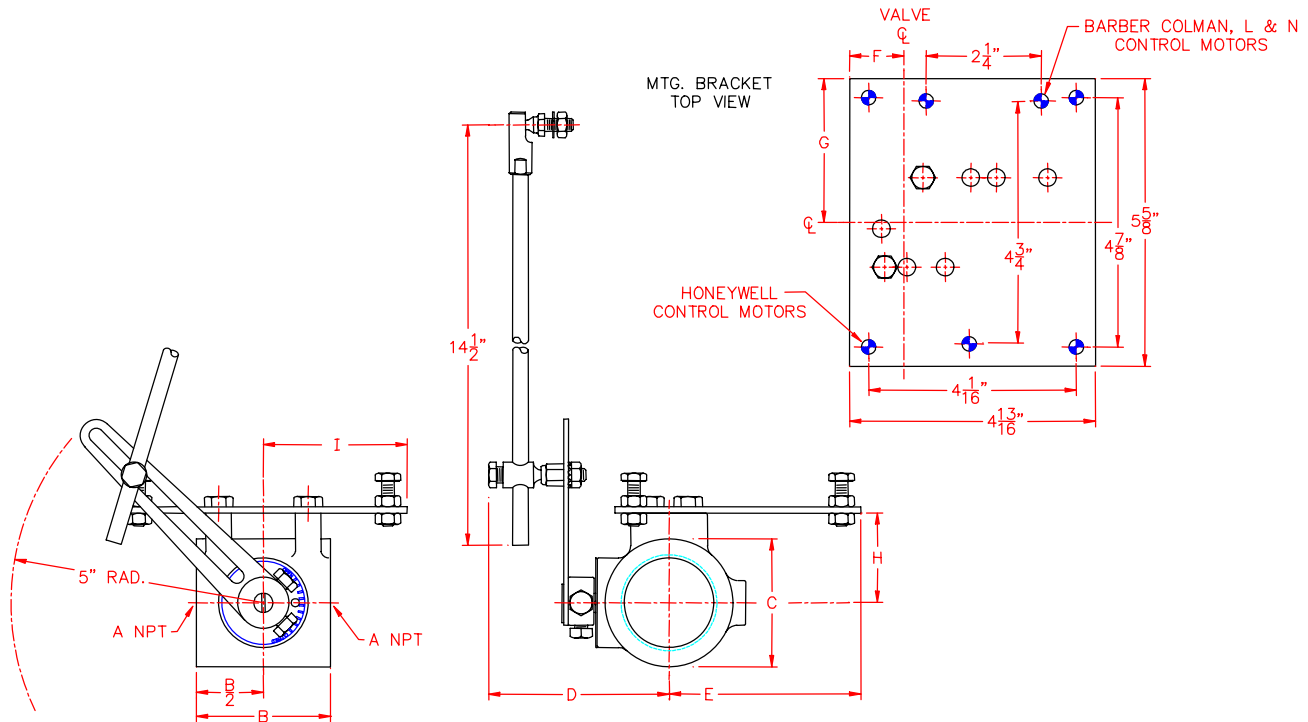
ORDAN THERMAL PRODUCTS LTD
Combustion Equipment & Controls for Industry
21 Amber St # 9, Markham Ontario Canada L3R 4Z3
Tel: (905) 475-9292 Fax: (905) 475-3286
www.ordanthermal.com

NOTICE: PYRONICS practices a policy of continuous improvement in the design of its products. It reserves the right to change the specifications at any time without prior notice.

VALVES THREADED BUTTERFLY MOTORIZED PACKAGE

BULLETIN 1312
PAGE NO. 2

DIMENSIONS



Model No.	A	B	C	D	E	F	G	H	I	WEIGHT	
										LBS.	KGS.
6 TBV-CMAP	3/4	2-1/2	1-3/4 HEX	3	4-1/4	9/16	2-13/16	1-7/8	2-13/16	3.2	1.45
8 TBV-CMAP	1	2-5/8	2 HEX	3-3/8	3-13/16	1	2-7/16	1-13/16	3-3/16	3.7	1.68
10 TBV-CMAP	1-1/4	2-5/8	2-1/4 HEX	3-1/2	3-13/16	1	2-7/16	2-1/8	3-3/16	4.0	1.82
12 TBV-CMAP	1-1/2	2-5/8	2-1/2	3-5/8	3-3/4	1-1/16	2-13/16	2-1/8	2-13/16	4.0	1.82
16 TBV-CMAP	2	3	3	3-7/8	3-9/16	1-1/4	2-13/16	2-7/16	2-13/16	5.0	2.27
20 TBV-CMAP	2-1/2	3-1/2	3-7/8	4-3/8	3-1/16	1-3/4	2-13/16	3-1/8	2-13/16	8.2	3.72
24 TBV-CMAP	3	3-7/8	4-1/2	4-1/2	2-13/16	2	2-13/16	3-3/8	2-13/16	11.0	5.00
32 TBV-CMAP	4	4-1/4	5-3/8	5	2-5/16	2-1/2	2-13/16	3-3/16	2-13/16	11.1	5.04
48 TBV-CMAP	6	5-1/8	7-7/8	6-3/8	-----	3-7/8	2-13/16	4-7/8	2-13/16	28.5	12.94

NOTE: All dimensions are in inches.

ORDERING INFORMATION

1. Specify Model Number and Quantity.
2. Specify Make, Model Number and Quantity of Control Motors (if required).
3. Shipping Instructions