

VALVES FLANGED BUTTERFLY MOTORIZED PACKAGE

MODEL: 1302-BV-CMAP

Revision: 0

BULLETIN
1302

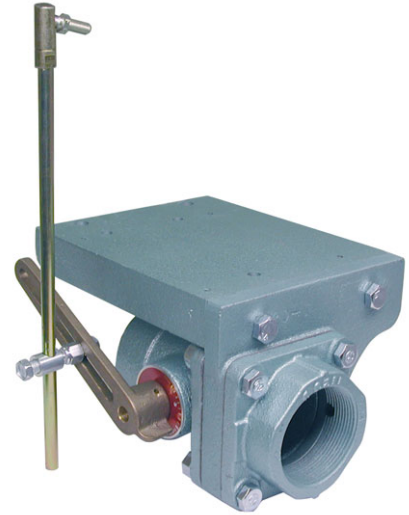
DESCRIPTION

The BV-CMAP motor operated butterfly valves are used for modulating air and gas flows for most types of combustion systems. The flanged construction eliminates the need for pipe unions. A unique "O"-Ring seal prevents leakage around the shaft.

The valve crank rotates through an 80° arc. Disc position is indicated by the crank arm pointer relative to the valve nameplate scale. The motor mounting base is pre-drilled for Honeywell, Barber Colman, and Leeds & Northrup control motors. The valves may be mounted either horizontal or vertical.

Modulating motors generally require that the shaft be horizontal. The motor should be wired according to the manufacturer's installation instructions so that proper rotation is achieved. Limit switches on modulating motors should be used to limit stroke.

The BV-CMAP includes the butterfly valve, motor mounting brackets, valve crank arm, and an adjustable linkage rod.



CAPACITY TABLE

Model Number	Pipe Size NPT (in.)	SCFH Air Wide Open Capacity at 1" W.C. Pressure Drop
6BV-CMAP	3/4	900
8BV-CMAP	1	1,100
10BV-CMAP	1-1/4	2,500
12BV-CMAP	1-1/2	2,800
16BV-CMAP	2	5,200
20BV-CMAP	2-1/2	8,600
24BV-CMAP	3	13,100
32BV-CMAP	4	25,000
48BV-CMAP	6	55,000

FEATURES

- Economical automatic flow control valve
- For most fuel gases and air
- Double bearing shaft - positive alignment
- "O"-Ring sealed shaft
- Disc position indicator
- Cast iron body and steel disc
- Lubricated swivel joints
- 90° of 160° motor operation field adjustable
- Easily adjustable
- 1/8" NPT tap for pressure

CAUTION: Operation of combustion equipment can be hazardous resulting in bodily injury or equipment damage. Each burner should be supervised by a combustion safeguard and only qualified personnel should install, make system adjustments and perform any required



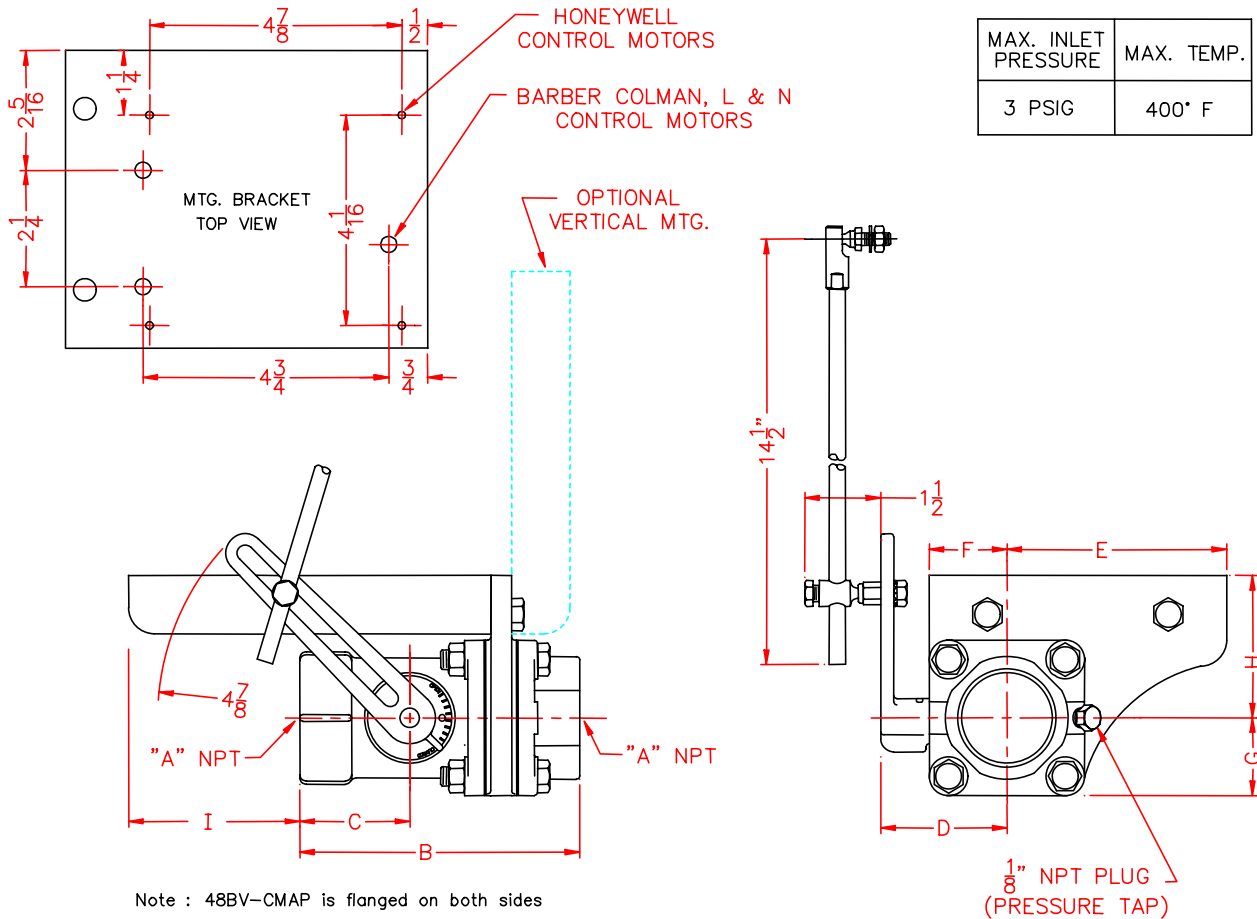
ORDAN THERMAL PRODUCTS LTD
Combustion Equipment & Controls for Industry
21 Amber St # 9, Markham Ontario Canada L3R 4Z3
Tel: (905) 475-9292 Fax: (905) 475-3286
www.ordanthermal.com

NOTICE: PYRONICS practices a policy of continuous improvement in the design of its products. It reserves the right to change the specifications at any time without prior notice.

VALVES FLANGED BUTTERFLY MOTORIZED PACKAGE

BULLETIN 1302
PAGE NO. 2

DIMENSIONS



MAX. INLET PRESSURE	MAX. TEMP.
3 PSIG	400° F

Model Number	A	B	C	D	E	F	G	H	I	Weight	
										Lbs.	Kgs.
6BV-CMAP	3/4	4-7/8	2	2-3/16	4-7/16	1-5/16	1-3/16	2-7/16	3-1/2	8.2	3.8
8BV-CMAP	1	4-7/8	2	2-3/16	4-7/16	1-5/16	1-3/16	2-7/16	3-1/2	8.2	3.8
10BV-CMAP	1-1/4	5-1/2	2-1/8	2-7/16	4-1/4	1-1/2	1-1/2	2-3/4	3-5/16	10.0	4.5
12BV-CMAP	1-1/2	5-1/2	2-1/8	2-7/16	4-1/4	1-1/2	1-1/2	2-3/4	3-5/16	10.0	4.5
16BV-CMAP	2	5-3/4	2-3/8	2-3/4	4	1-3/4	1-3/4	3	3-1/8	12.8	5.9
20BV-CMAP	2-1/2	6-1/4	2-5/8	3-1/8	3-3/4	2	2	3-1/4	2-11/16	15.4	7.0
24BV-CMAP	3	6-5/8	2-3/4	3-3/8	3-7/16	2-5/16	2-3/16	3-7/16	2-1/2	16.2	7.2
32BV-CMAP	4	7	3-1/8	3-7/8	3	3	3	4-1/4	2-1/16	18.5	8.4
48BV-CMAP	6	10-1/2	5	5-3/16	4-3/8	4-3/16	4	5-1/4	-----	38.0	15.4

NOTE: All dimensions are in inches.

ORDERING INFORMATION

1. Specify Model Number and Quantity
2. Specify Make and Model Number of Control Motors (if required)
3. Shipping Instructions